



CO ▼ LaN

11 & 12 October 2023
Nancy, France

Program and information

CAPE-OPEN 2023 ANNUAL MEETING

PROGRAM

11 October 2023 | Salle Letort

08:30 Registration of participants

09:00 **Welcome address** by École Nationale Supérieure des Industries Chimiques ([ENSIC](#)) and by the Laboratoire Réactions et Génie des Procédés ([LRGP](#))

09:20 **A quick walk through the programme** | Michel Pons, Michel Pons Consulting.

09:35 **CAPE-OPEN Test Suite for PMCs** | Malcom Woodman, MR Woodman Consulting – [Read more.](#)

10:25 Break

10:45 **UNIT SIG Progress Report** | Krishna Murthy Penukonda, AVEVA (remote) – [Read more.](#)

11:00 **Mixing COBIA & COM in proprietary hydroprocessing models – a CAPE-OPEN showcase** | Jasper van Baten, AmsterCHEM – [Read more.](#)

11:30 **First principles PRocess concepts for the conversion of complex MixturEs (PRIME) as CAPE OPEN tool: challenges and opportunities** | Cesar Pernalet, University of Ghent – [Read more.](#)

11:55 **System modelling of methanol reformed fuel cell system with integration of Python Unit Operations** | Malthe Lindquist, Blue World Technologies – [Read more.](#)

12:15 **HTRI Experiences with COBIA** | David Gibbons, HTRI – [Read more.](#)

12:30 Lunch

13:30 **CAPE-OPEN Test Suite for PMEs** | Malcom Woodman, MR Woodman Consulting – [Read more.](#)

14:10 **Developing a unit operation model for membrane based subsea gas separation in the COMPMEM project using CAPE-OPEN COBIA** | Olaf Trygve Berglihn, SINTEF (remote) – [Read more.](#)

14:35 **Process Modeling in Dymola** | Claas Heckel, 3DS | Claas Heckel, 3DS (remote) – [Read more.](#)

15:00 Break

15:30 **Methods & Tools SIG progress report** | Bill Barrett, US EPA (remote) – [Read more.](#)

16:00 **Preliminary interoperability tests of CARNOT Property Package Manager in CAPE-OPEN 1.1 Process Modelling Environments** | Martin Gainville, IFPEN – [Read more.](#)

16:30 End of the first day

18:30 City tour of Nancy – start at Hotel de Guise (1h through the beautiful city of Nancy).

19:45 Conference dinner – at Grand Café Foy

12 October 2023 | Salle Villermaux

09:00 Start Day 2

09:00 **Annual General Meeting of CO-LaN** | Richard Baur, Shell and Philippe Arpentinier, Air Liquide.

10:00 **CAPE-OPEN Award Ceremony**

10:20 **Potential of new DEXPI standards to support better data integration with process simulation** | David Cameron, University of Oslo – [Read more.](#)

10:45 Break

11:10 **Thermo SIG progress report** | Sergej Blagov, BASF and Jasper van Baten, AmsterCHEM – [Read more.](#)

11:35 **Investigating the impact of impurities in the CO₂ streams for the Carbon Capture and Transportation value chain using MATLAB and CAPE-OPEN** | Jens Peter Hansen, ECA Engineering Aps. (remote) – [Read more.](#)

12:00 **Why and how CAPE-OPEN technology can help us to enable reliable modelling of Carbon Capture, Transport & Storage (CCS) systems?** | Eduardo Luna-Ortiz, Pace CCS Ltd. (remote) – [Read more.](#)

12:30 Lunch

13:30 **Training (On demand – only for in person attendants):** How to easily develop a CAPE-OPEN Process Modelling Component and use a CAPE-OPEN Process Modelling Component in a process simulator. – [Read more.](#)

16:30 End of Day 2.

Please note that this program is subject to change, and CO-LaN reserves the right to amend the agenda if necessary.

OTHER INFO

Venue info

The CAPE-OPEN 2023 Annual Meeting will be hosted by the [Ecole Nationale Supérieure des Industries Chimiques \(ENSIC\)](#) and the [Laboratoire Réactions et Génie des Procédés](#) in Nancy (France).

Main entrance address: 1, rue Grandville 54001 Nancy France. [GPS Point](#).

11 October: Salle Letort

12 Octobre: Salle Villermaux

Conference Dinner

The conference dinner is offered by CO-LaN to all participants that have registered for the dinner.

The dinner will take place at [Grand Café Foy](#).

Address: 1 Pl. Stanislas 54000 Nancy France ; [GPS point](#).

City Tour

The city tour is offered by CO-LaN to all in-person participants.

Starts at 18:30 in front of Hotel de Guise ([GPS point](#)) ending at the conference dinner.

The visit allows you to discover the heritage of the Dukes of Lorraine. The charm of the Old Town, medieval and Renaissance, is revealed thanks to its architectural jewels (Ducal Palace, mansions, Porte de la Craffe). The visit includes the UNESCO complex around Place Stanislas, which we owe to the last Duke of Lorraine, and Place de la Carrière. Other places such as the Saint-Epvre basilica will also be part of the tour.

Contact & Questions

Contact us by [Email](#) or [Phone/WhatsApp](#)

Registration is mandatory

Registration

- **Full Conference:** [register here](#) if you want to participate to the full conference.
Registration Fee: 70,00€ VAT excluded. The registration fee is covering the costs of coffee breaks and lunches for in-person participants.
- **Only training:** [register here](#) if you want to participate only to the training course that will be held on the 12th of October from 13:30-16:30. No registration fee is applicable.

If you can't access the registration form, contact us by [Email](#) or [Phone/WhatsApp](#).

Procedure for conference attendees

- Once you have submitted the registration form, you will receive an automated email confirming your successful conference registration.
- Upon receipt of your registration, the CO-LaN office manager will generate an invoice for the registration fee (if applicable) and send it to you via email. Payment is required to be made by bank transfer upon receipt of the invoice.

The registration fee is refundable till September 15, 2023 (minus administrative costs of 10 EUR VAT excluded).

Hotel Suggestions

- [Hotel de Guise](#) (5mn walk to ENSIC)
- [Nancy Gare Campanile Hotel](#) (15mn walk to ENSIC)

More hotels will be available soon, we are currently working in collaboration with Nancy Tourism information desk to provide you with a larger selection of hotels.

Traveling to Nancy by Public Transport

Train | Railway station (SNCF) - Nancy

3, place Thiers 54000 Nancy [GPS point](#)

In the city center, a five-minute walk from Place Stanislas.

Train tickets: [SNCF](#)

Train | Lorraine TGV

57420 Louvigny [GPS point](#).

From Lorraine TGV, take shuttle bus to Nancy.

Shuttle information [keolissudlorraine.com/fiche-horaires-navette-tgv/](https://www.keolissudlorraine.com/fiche-horaires-navette-tgv/)

Train and shuttle tickets: [SNCF](#)

Plane | Paris CDG airport

Paris Charles De Gaulle Airport 95700 Roissy-en-France [GPS Point](#)

Airport code: CDG ; Website: [parisaeroport.fr](https://www.parisaeroport.fr)

From Paris CDG take the TGV from Aéroport Chales de Gaulle 2 TGV to Gare Lorraine TGV.

From Lorraine TGV, take shuttle bus to Nancy.

Shuttle information : [keolissudlorraine.com/fiche-horaires-navette-tgv/](https://www.keolissudlorraine.com/fiche-horaires-navette-tgv/)

Train and shuttle tickets: [SNCF](#)

Plane | Luxembourg International airport

Aéroport de Luxembourg lux-Airport, L-1110 Luxembourg (Findel) [GPS Point](#)

Airport Code : LUX; Website: lux-airport.lu

Take the bus to Luxembourg Gare Centrale and from there take train to Nancy.

Train tickets: [SNCF](#)

Plane | Metz-Nancy Lorraine regional airport

57420 GOIN [GPS Point](#).

45 km north of Nancy, on the A31 motorway.

Airport Code: ETZ; Website: lorraineairport.com

[Frequent shuttle service](#) between the airport and Nancy (8€ that you can pay by credit card on the shuttle - 40 minutes traveling)

Tourism Information | Why you should come to Nancy

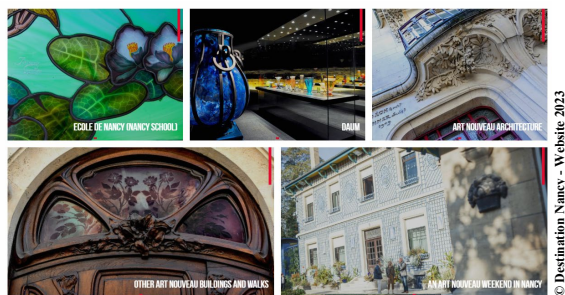
Place Stanislas and the UNESCO World Heritage Site

The fountains flowed with wine in 1755 when Stanislaw Leszczynski inaugurated one of the finest squares in the world. Ever since, Nancy has been known as ‘the city with the golden gates’. Place Stanislas alone is worth a visit to Nancy. Together with Place de la Carrière, Place d’Alliance and the



triumphal arch, it forms an 18th-century ensemble, listed as a UNESCO World Heritage site since 1983. The aim of the major urban development programme carried out by Stanislaw, the last Duke of Lorraine, was to link Nancy’s old (Ville Vieille) and new (Ville Neuve) towns.

The French Capital of Art Nouveau



To Taste and smell the local Specialties



For more information, read the latest edition of [Visit Nancy](#).



CO ▼ LaN

CAPE-OPEN Laboratories Network (CO-LaN)
Paris Innovation Campus, Direction Scientifique, 1 chemin de la Porte des Loges,
BP 126, F-78354 JOUY-EN-JOSAS Cedex, France
© 2023 CAPE-OPEN Laboratories Network