

2013
CAPE-OPEN Annual Meeting

HTRI Developments and CAPE-OPEN

David Gibbons

*Technical Lead, Process Simulation and
Engineering Product Interfaces*

HTRI®

Unit Operations – Simple or detailed

Simple model

- UniSim Design
- VMGSim
- PRO/II
- ProMax
- Petro-SIM
- ProSimPlus
- Aspen HYSYS
- Aspen Plus

Detailed model



Xchanger Suite

- *Xist*[®]
- *Xace*[®]
- *Xpfe*[®]
- *Xphe*[®]
- *Xhpe*[®]
- *Xjpe*[®]
- *Xspe*[®]

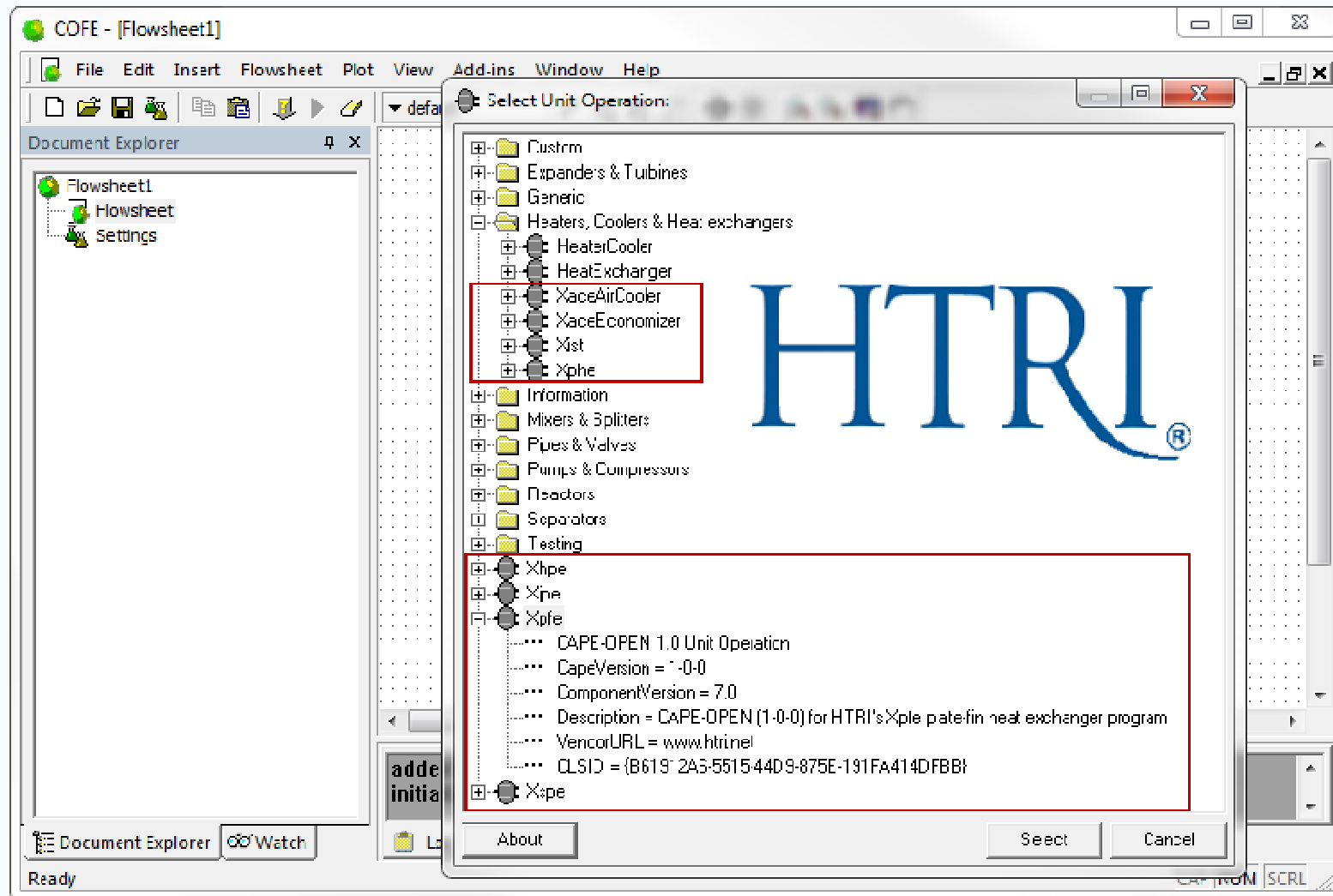
Types of links

- HTRILink
(e.g., *Xist* to UniSim Design, Petro-SIM, and Aspen HYSYS)
Link developed by HTRI to extend the process simulator capabilities
- Directly embedded
(e.g., within UniSim Design, PRO/II, and VMGSim)
Typically, link developed by process simulator vendors
- CAPE-OPEN standard
Allows links to any simulator that supports CAPE-OPEN

What is new in SP1?

- *Xpfe* as a CAPE-OPEN unit operation
- Support for CAPE-OPEN Thermo 1.1 in HTRI unit operations

CAPE-OPEN – HTRI Unit Operations



CAPE-OPEN – *Xpfe*

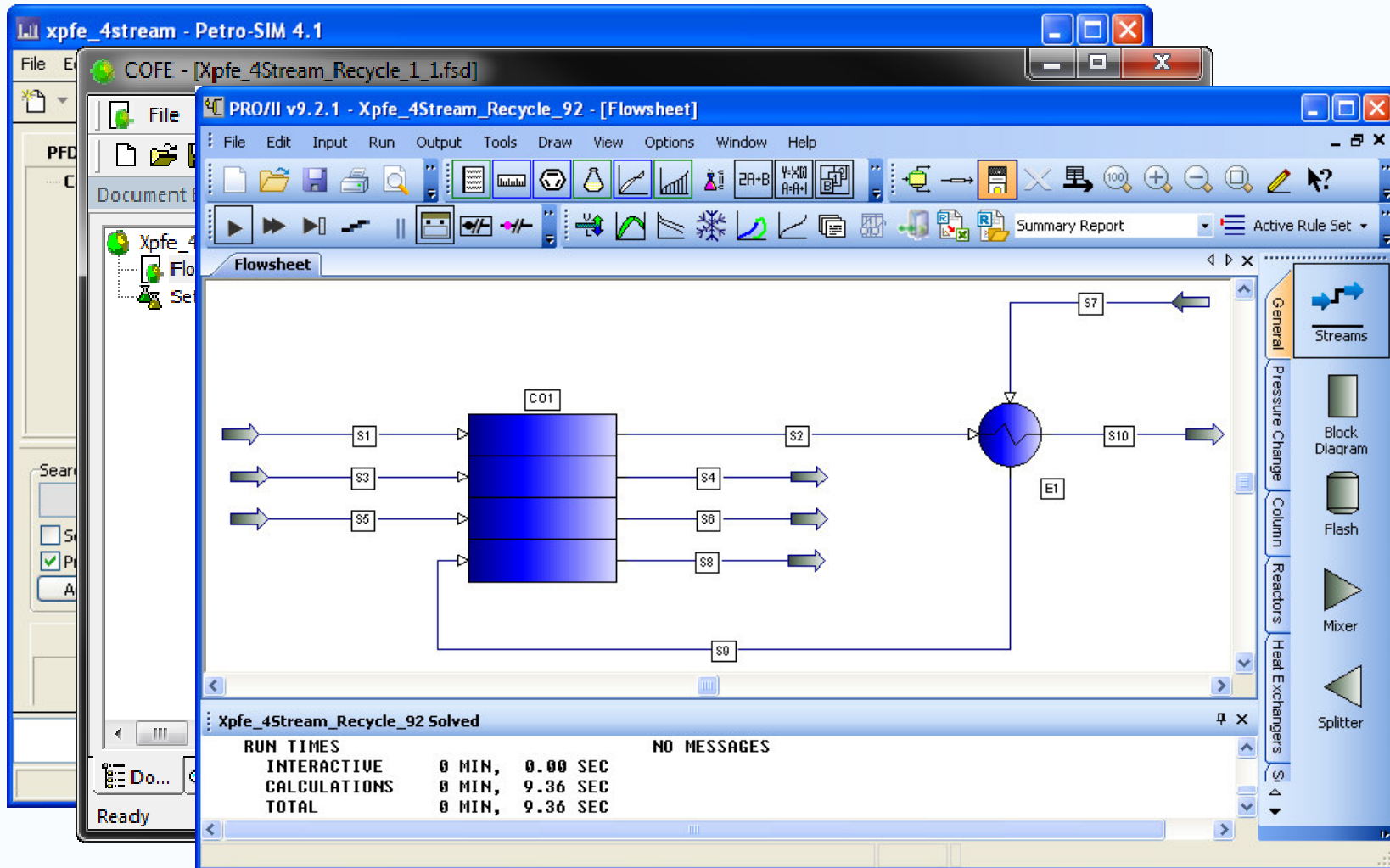


Plate-fin calculations using *Xpfe* can be performed in flowsheets via CAPE-OPEN

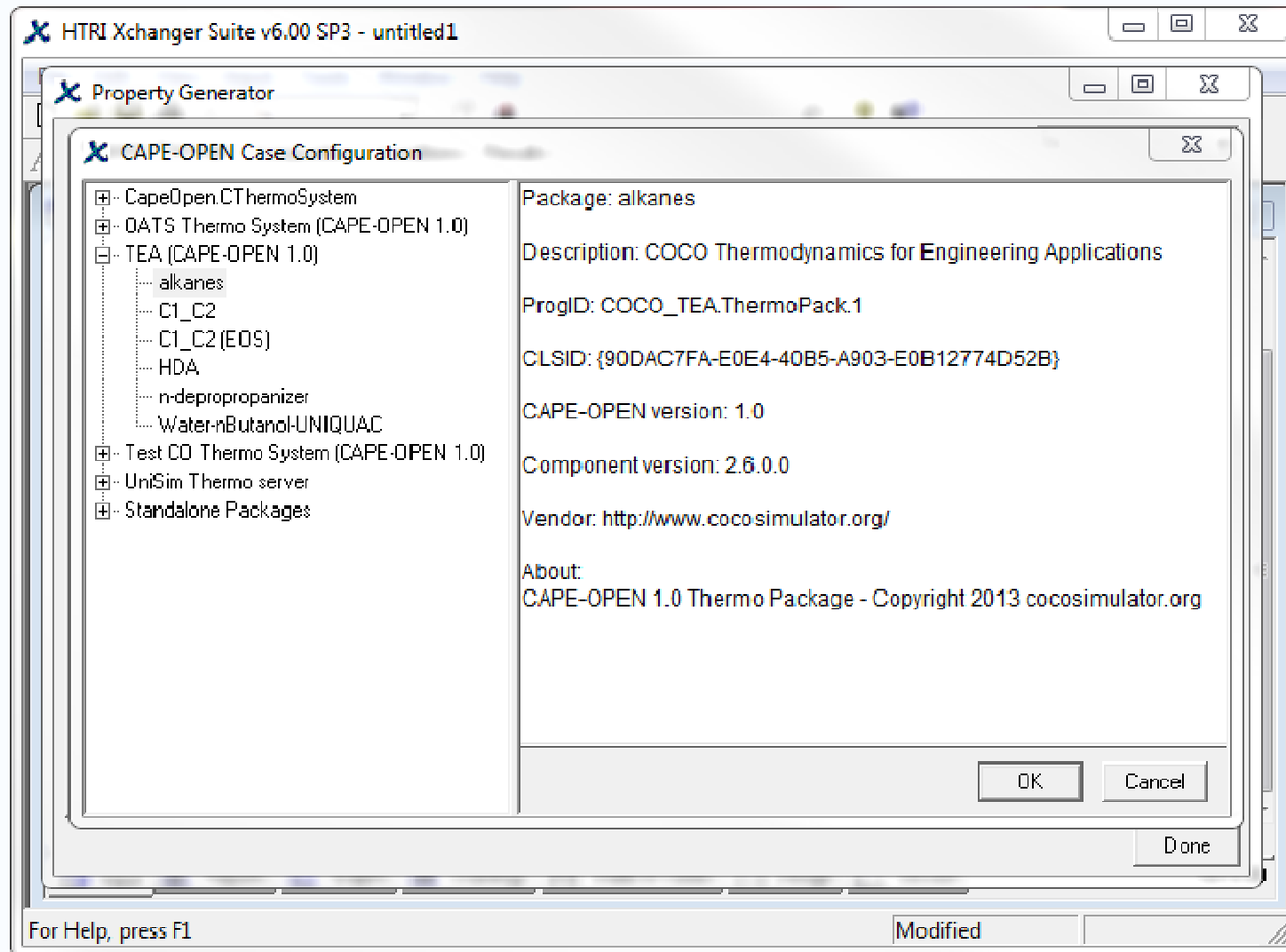
Requirements

- *Xchanger Suite*
 - Version 7 License
 - Version 7 SP1
- CAPE-OPEN compliant simulator

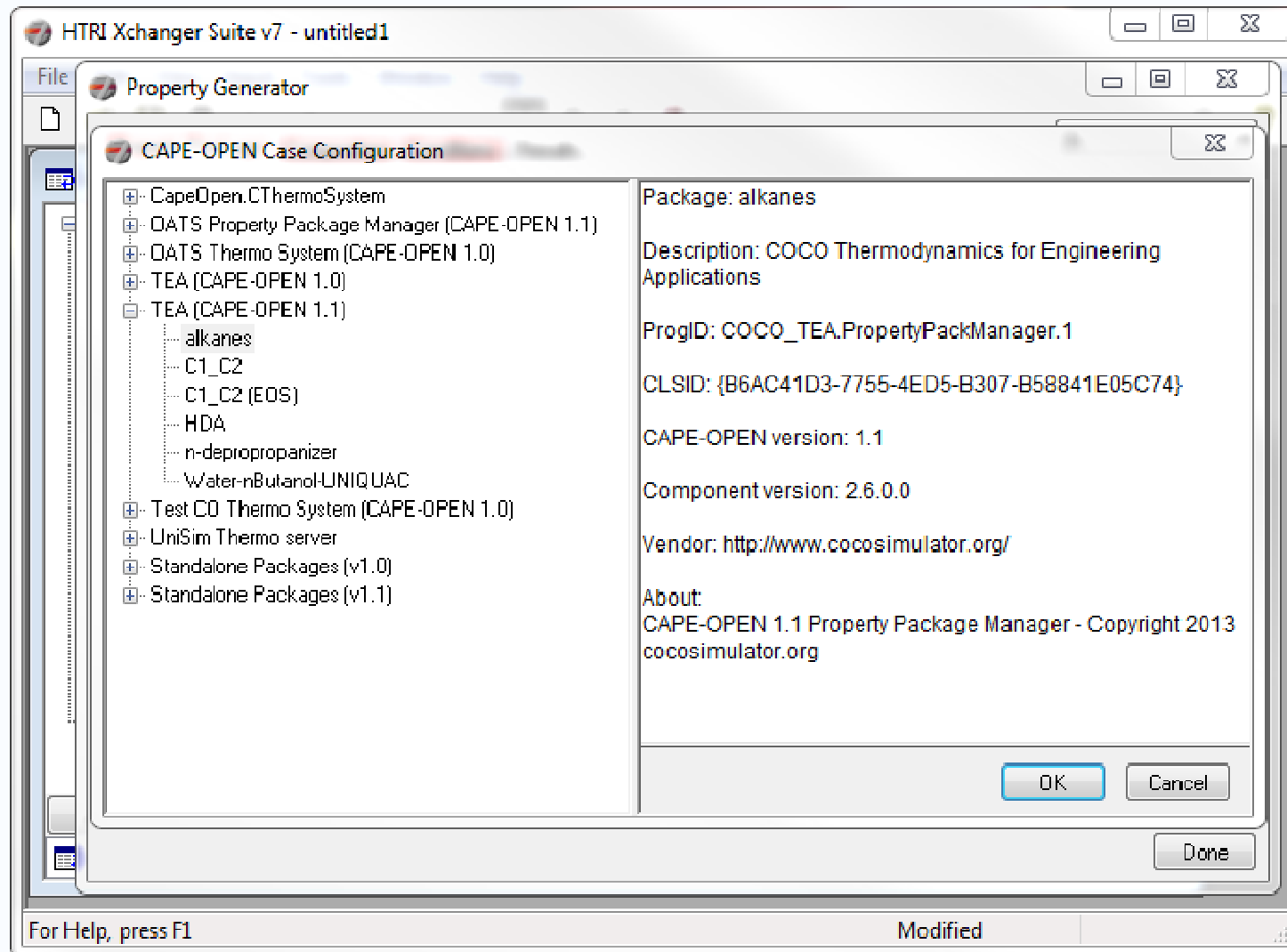
Benefits

- Availability of *Xpfe* in simulator supporting CAPE-OPEN
- Support for CAPE-OPEN Thermo 1.1 standard for all supported exchanger types

CAPE-OPEN – Xchanger Suite 6 and Thermo 1.0



CAPE-OPEN – Xchanger Suite 7 and Thermo 1.1



Version 7 SP1 is now in testing

- Internal, member, and sub-contractor testing underway
- Release version planned for November 2013